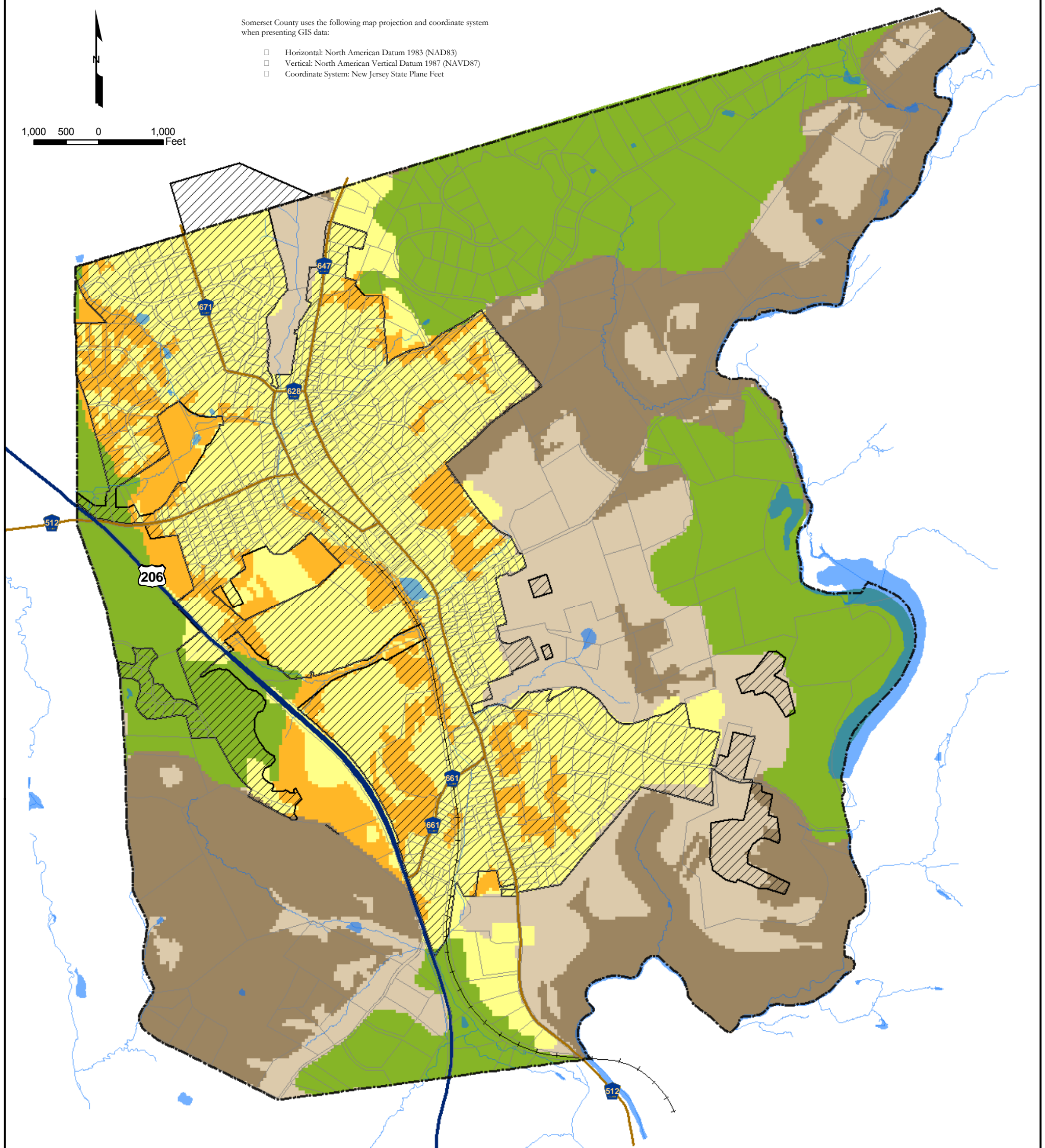
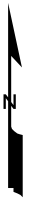


Somerset County uses the following map projection and coordinate system when presenting GIS data:

- Horizontal: North American Datum 1983 (NAD83)
- Vertical: North American Vertical Datum 1987 (NAVD87)
- Coordinate System: New Jersey State Plane Feet

1,000 500 0 1,000
Feet



Legend

HIGHLANDS LAND USE CAPABILITY ZONE

- Protection Zone
- Conservation Zone
- Existing Community Zone
- Conservation Zone - Environmentally Constrained Sub-zone
- Existing Community Zone - Environmentally Constrained Sub-zone
- PROPOSED FUTURE SERVICE AREAS FOR FACILITIES DISCHARGING TO SURFACEWATER (SW) AND GROUNDWATER (GWIND)

NOTES

1) This map is intended to illustrate the relationship between Future Wastewater Service Area Boundaries and the Highlands Regional Master Plan – Land Use Capability Zones. Future wastewater service area boundaries are not intended to coincide with Highlands Land Use Capability Map (LUCM) boundaries since they were developed at different scales using more current data and different methods and assumptions. Furthermore, the purpose and intent of the Future Wastewater Service Area boundaries are different from the purpose and intent of the Highlands RMP – LUCM Zone boundaries. However, general consistency between the Future Wastewater Service Areas and the Highlands RMP – LUCM Zones is clearly demonstrated.

AREAS TO BE SERVED BY INDIVIDUAL SUBSURFACE SEWAGE DISPOSAL SYSTEMS WITH PLANNING FLOWS 2,000 GPD OR LESS (ISSDS)

STREAMS AND WATER BODIES

PARCEL BOUNDARIES

MUNICIPAL BOUNDARIES

MAJOR ROADS

- US Highway
- County Road
- RAILROADS

DATA SOURCES

- NJ HIGHLANDS COUNCIL
 - Highlands RMP, Land Use Capability Zone Map
- NEW JERSEY DEPARTMENT OF ENVIRONMENTAL PROTECTION (NJ DEP)
 - Streams and Water Bodies (Hydrology)
- SOMERSET COUNTY GIS ENTERPRISE
 - Municipal Boundaries
 - Parcels Boundaries
 - Highways & County Roads
 - Railroads
- SOMERSET COUNTY PLANNING DIVISION
 - Proposed Service Areas for Facilities Discharging to Surface Water and Groundwater

PEAPACK - GLADSTONE BOROUGH
Somerset County, NJ
Delta Map
FUTURE WASTEWATER SERVICE AREAS
AND THE
HIGHLANDS REGIONAL MASTER PLAN