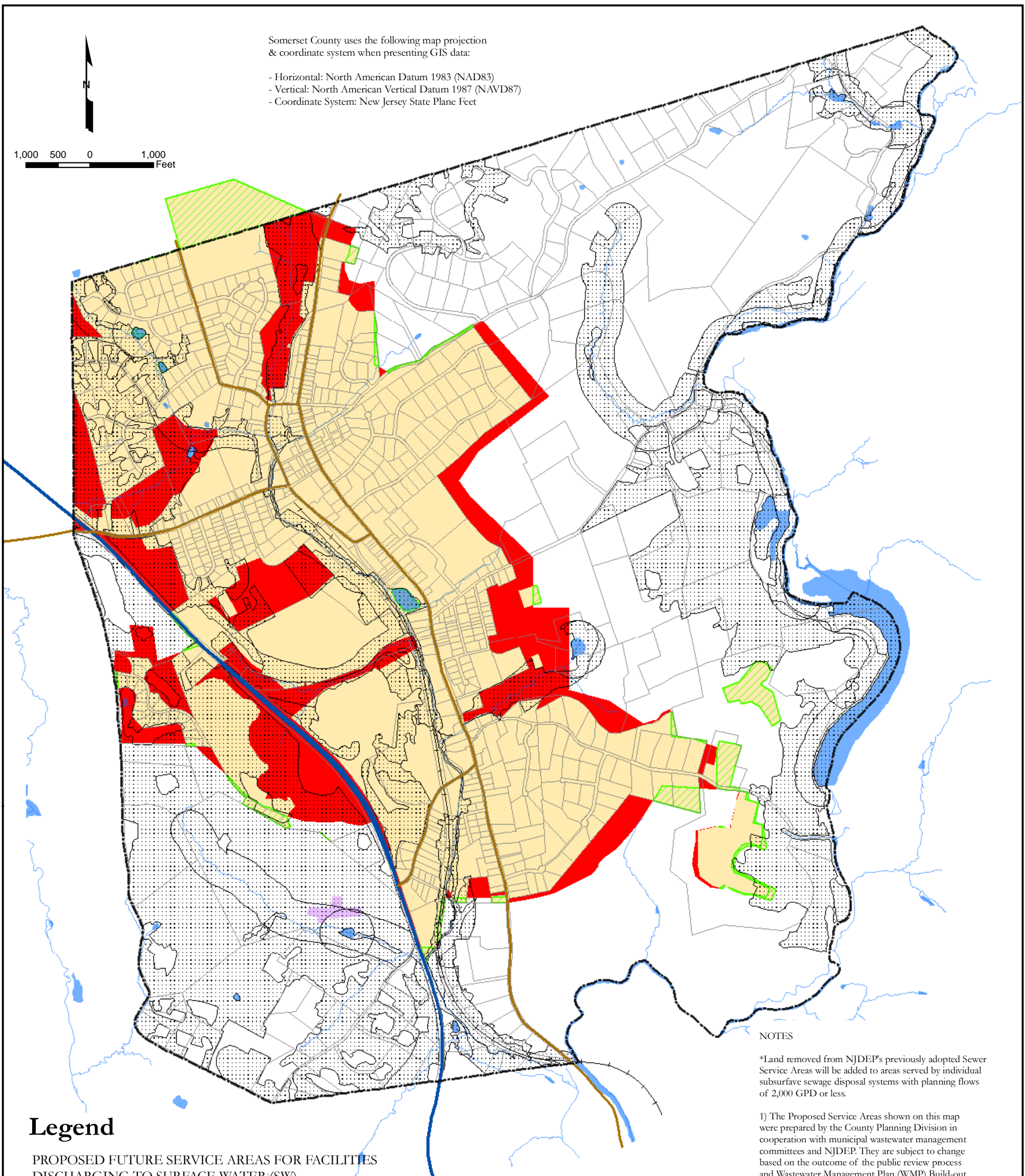


Somerset County uses the following map projection & coordinate system when presenting GIS data:

- Horizontal: North American Datum 1983 (NAD83)
- Vertical: North American Vertical Datum 1987 (NAVD87)
- Coordinate System: New Jersey State Plane Feet

1,000 500 0 1,000 Feet



## Legend

### PROPOSED FUTURE SERVICE AREAS FOR FACILITIES DISCHARGING TO SURFACE WATER (SW)

Environmental Disposal Corporation WTP

### PROPOSED FUTURE SERVICE AREAS FOR FACILITIES DISCHARGING TO SURFACE WATER (GW)

Essex Hunt Club

AREAS TO BE SERVED BY INDIVIDUAL SUBSURFACE SEWAGE DISPOSAL SYSTEMS WITH PLANNING FLOWS 2,000 GPD OR LESS (ISSDS)

AREAS REMOVED FROM PREVIOUSLY ADOPTED SEWER SERVICE AREA (SSA)\*

AREAS ADDED TO PREVIOUSLY ADOPTED SSA

ENVIRONMENTALLY SENSITIVE AREAS

STREAMS AND SURFACE WATER

PARCEL BOUNDARIES

MUNICIPAL BOUNDARIES

MAJOR ROADS

US Highway

County Road

RAILROADS

### DATA SOURCES

NEW JERSEY DEPARTMENT OF ENVIRONMENTAL PROTECTION (NJ DEP)  
 - NJ Statewide Sewer Service Area (Version 200903)  
 - Environmentally Sensitive Areas  
 - Streams and Water Bodies (Hydrology)

SOMERSET COUNTY GIS ENTERPRISE  
 - Municipal Boundaries  
 - Parcels Boundaries  
 - Highways & County Roads  
 - Railroads

SOMERSET COUNTY PLANNING DIVISION  
 - Proposed Service Areas for Facilities Discharging to Surface Water and Groundwater

### NOTES

\*Land removed from NJDEP's previously adopted Sewer Service Areas will be added to areas served by individual subsurface sewage disposal systems with planning flows of 2,000 GPD or less.

1) The Proposed Service Areas shown on this map were prepared by the County Planning Division in cooperation with municipal wastewater management committees and NJDEP. They are subject to change based on the outcome of the public review process and Wastewater Management Plan (WMP) Build-out and Capacity Analysis.

2) This map is intended for historical informational purposes only and shall not be used for consistency determinations.

3) Locations shown as "Areas Added to NJDEP's Previously Adopted SSA" are not within NJDEP's previously adopted SSA, and are proposed to be included upon adoption. Locations shown as "Areas Removed from NJDEP's Adopted SSA" are within NJDEP's previously adopted SSA but proposed to be removed upon adoption of the updated WMP for Somerset County by NJDEP.

4) Environmentally Sensitive Areas are comprised of contiguous areas of 25 acres or larger consisting of areas mapped as endangered or threatened wildlife species habitat, Natural Heritage Priority Sites, Special Water Resource Protection Areas along Category One waters and their tributaries and wetlands by NJDEP.

PEAPACK - GLADSTONE BOROUGH  
 Somerset County, NJ  
 Delta Map  
 PROPOSED & PREVIOUSLY ADOPTED  
 FUTURE  
 WASTEWATER SERVICE AREAS