

DATA SOURCES

NEW JERSEY DEPARTMENT OF ENVIRONMENTAL PROTECTION (NJ DEP)  
 - NJ Statewide Sewer Service Area (Version 200903)  
 - Environmentally Sensitive Areas  
 - Streams and Water Bodies (Hydrology)

SOMERSET COUNTY GIS ENTERPRISE  
 - Municipal Boundaries  
 - Parcels Boundaries  
 - Highways & County Roads  
 - Railroads

SOMERSET COUNTY PLANNING DIVISION  
 - Proposed Service Areas for Facilities Discharging to Surface Water and Groundwater

MONTGOMERY TWP  
 Somerset County, NJ

MAP III

FUTURE WASTEWATER SERVICE AREAS

Legend

PROPOSED SERVICE AREAS FOR FACILITIES DISCHARGING TO SURFACE WATER (SW)

- Carrier Foundation, (NJ0023663)
- Cherry Valley, (NJ0069523)
- Oxbridge, (NJ0067733)
- Pike Brook, (NJ0060038)
- Riverside Farms, (NJ0060038)
- Skillman Village, (NJ0022390)
- Stage II, (NJ0026905)

PROPOSED SERVICE AREAS FOR FACILITIES DISCHARGING TO GROUNDWATER (GWIND)

- 1 Crossing at Beden Brook
- 2 Mattawang Country Club
- 3 Minnesota Mining & MFG Co. (3M)
- 4 Montgomery Knolls Office Condominiums
- 5 Princeton Christian Church
- 6 Princeton Montessori School
- 7 St. Charles Borromeo Roman Catholic Church
- 8 Tusk Fusion Restaurant
- 9 Waldorf School

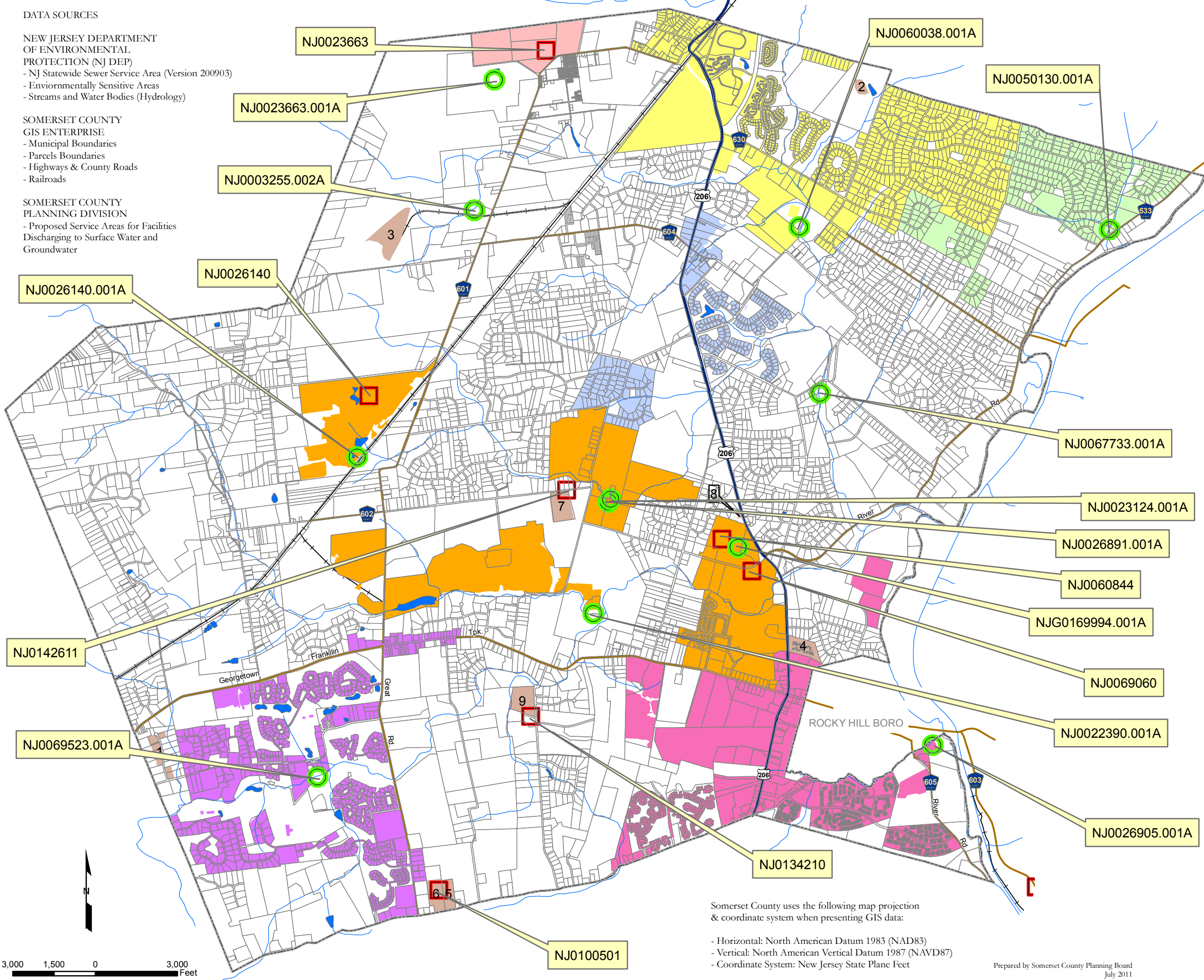
AREAS TO BE SERVED BY INDIVIDUAL SUBSURFACE SEWAGE DISPOSAL SYSTEMS WITH PLANNING FLOWS 2,000 GPD OR LESS (ISSDS)

EXISTING AND PROPOSED NJDES PERMITTED DISCHARGE LOCATIONS

- Surface Water Discharge (DSW)
- Groundwater Discharge (DGW)

WASTEWATER FACILITIES

- PS Pump Station
- Trunk Lines / Interceptors
- STREAMS AND WATER BODIES
- MUNICIPAL BOUNDARIES
- PARCEL BOUNDARIES
- MAJOR ROADS
- US Highway
- County Road
- Railroads



Somerset County uses the following map projection & coordinate system when presenting GIS data:

- Horizontal: North American Datum 1983 (NAD83)
- Vertical: North American Vertical Datum 1987 (NAVD87)
- Coordinate System: New Jersey State Plane Feet

Prepared by Somerset County Planning Board  
 July 2011

