

NOTES

1. The preserved lands shown on this map represent the best GIS information available at the current time. This data is a required component of the WMP Build-out and Capacity analysis.

2. Somerset County uses the following map projections & coordinate system when presenting GIS data:

- Horizontal: North American Datum 1983 (NAD83)
- Vertical: North American Vertical Datum 1987 (NAVD87)
- Coordinate System: New Jersey State Plane Feet

DATA SOURCES

NJ DEPARTMENT OF ENVIRONMENTAL PROTECTION (NJDEP)
 - Environmentally Sensitive Areas
 - Streams & Water Bodies (Hydrology)


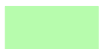

SOMERSET COUNTY ENTERPRISE
 - Municipal Boundaries
 - County-owned Open Space
 - Highways, County & Local Roads
 - Railroads

SOMERSET COUNTY PLANNING DIVISION
 - Preserved Lands

MUNICIPAL DATA
 - Adopted Master Plans, Green Acres Program information, Municipal GIS Open Space data, and other information provided by municipalities

Legend

LAND PRESERVATION TYPE:

-  **State Preserved Lands**
 (parkland, wetland mitigation areas, flood control areas, and other undevelopable state-owned lands)
-  **County Preserved Lands**
 (parkland, public golf courses, greenways, and other undevelopable county-owned lands)
-  **Local Preserved Lands**
 (municipal parkland, homeowner association common areas, stormwater management facilities, non-profit and private deed-restricted lands, and other undevelopable local lands)

 **ENVIRONMENTALLY SENSITIVE AREAS**

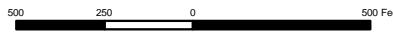
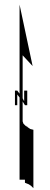
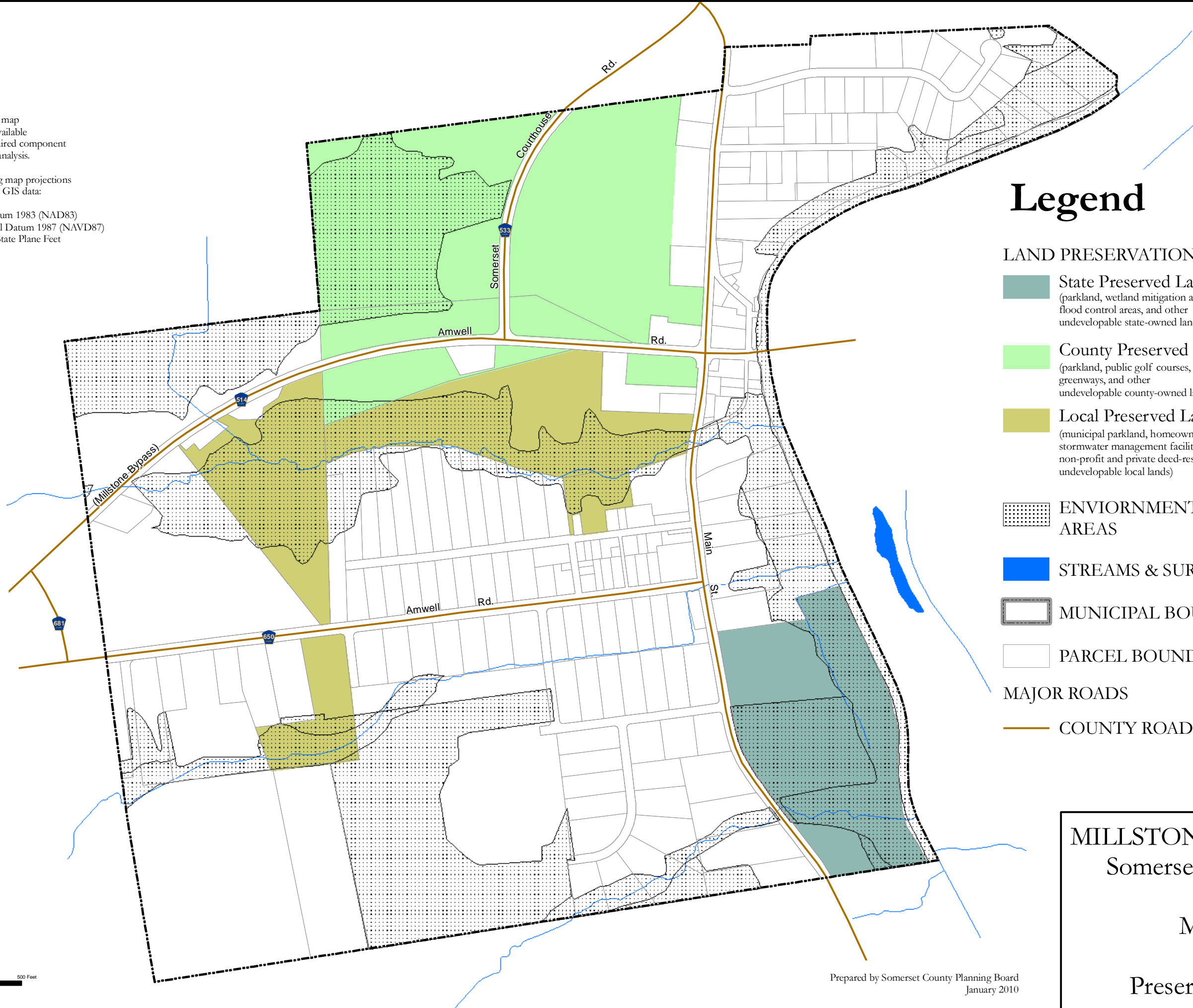
 **STREAMS & SURFACE WATER**

 **MUNICIPAL BOUNDARIES**

 **PARCEL BOUNDARIES**

MAJOR ROADS

 **COUNTY ROADS**



Prepared by Somerset County Planning Board
 January 2010

MILLSTONE BOROUGH
 Somerset County, NJ

Map V

Preserved Lands