

DATA SOURCES

NJ DEPARTMENT OF ENVIRONMENTAL PROTECTION (NJDEP)
 - Environmentally Sensitive Areas
 - Streams & Water Bodies (Hydrology)

SOMERSET COUNTY ENTERPRISE
 - Municipal Boundaries
 - County-owned Open Space
 - Highways, County & Local Roads
 - Railroads

SOMERSET COUNTY PLANNING DIVISION
 - Preserved Lands


MUNICIPAL DATA
 - Adopted Master Plans,
 Green Acres Program information,
 Municipal GIS Open Space data,
 and other information provided
 by municipalities

Legend

LAND PRESERVATION TYPE:


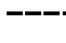



-  **State Preserved Lands**
 (parkland, wetland mitigation areas, flood control areas, and other undevelopable state-owned lands)
-  **County Preserved Lands**
 (parkland, public golf courses, greenways, and other undevelopable county-owned lands)
-  **Local Preserved Lands**
 (municipal parkland, homeowner association common areas, stormwater management facilities, non-profit and private deed-restricted lands, and other undevelopable state-owned lands)
-  **Preserved Farms**
 (farmland preserved through county or municipal easement or fee-simple purchase, deed restrictions or other permanent mechanisms)

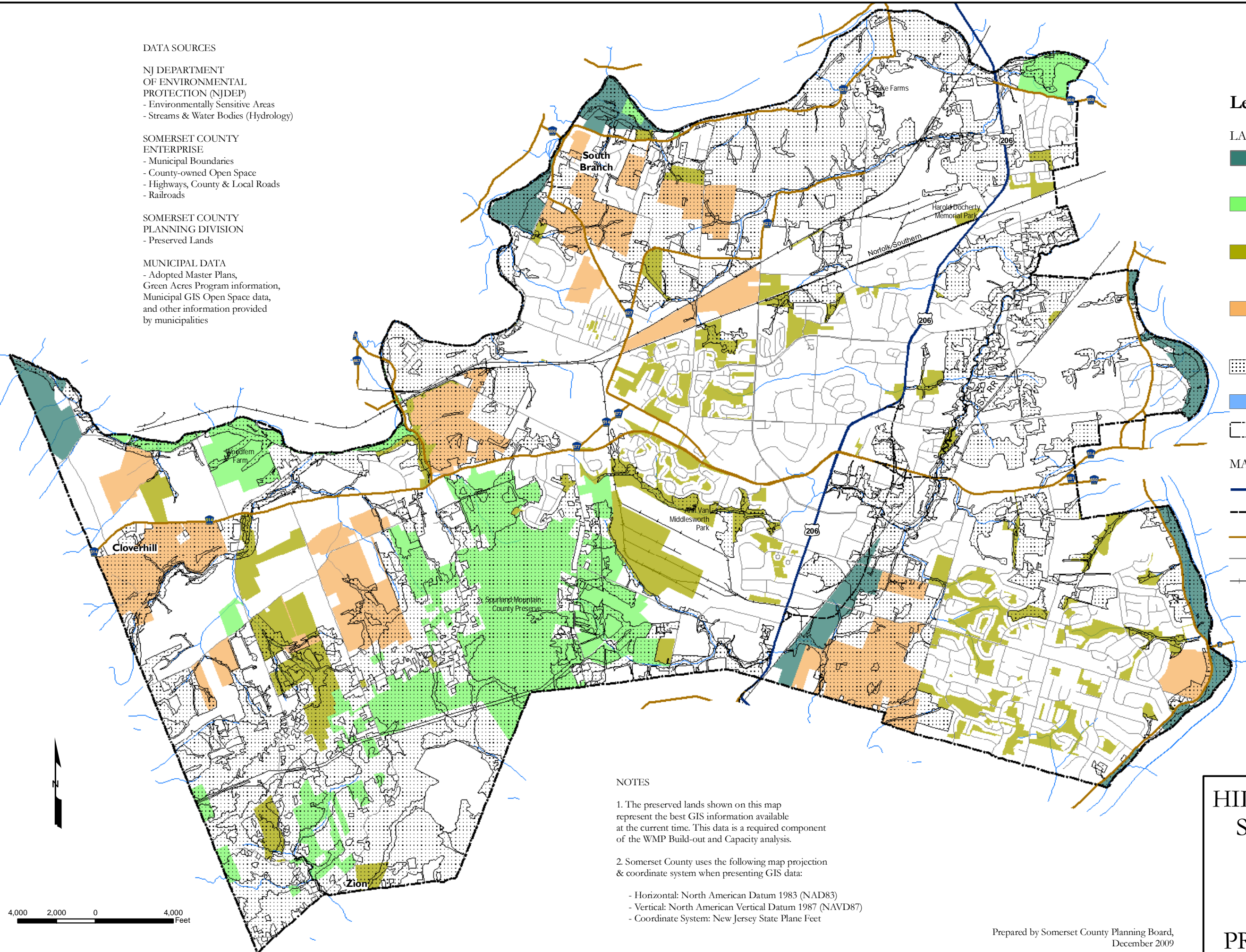
 **ENVIRONMENTALLY SENSITIVE AREAS**

 **STREAMS & WATER BODIES**

 **MUNICIPAL BOUNDARIES**

MAJOR ROADS:

-  US Highway Rt 206
-  Conceptual Rt 206 By-pass
-  County Roads
-  Local Streets
-  Railroads



NOTES

1. The preserved lands shown on this map represent the best GIS information available at the current time. This data is a required component of the WMP Build-out and Capacity analysis.

2. Somerset County uses the following map projection & coordinate system when presenting GIS data:

- Horizontal: North American Datum 1983 (NAD83)
- Vertical: North American Vertical Datum 1987 (NAVD87)
- Coordinate System: New Jersey State Plane Feet



Prepared by Somerset County Planning Board,
 December 2009

HILLSBOROUGH TWP
 Somerset County, NJ

Map V

PRESERVED LANDS