

DATA SOURCES

NEW JERSEY DEPARTMENT OF ENVIRONMENTAL PROTECTION (NJ DEP)
 - NJ Statewide Sewer Service Area (Version 200910)
 - Environmentally Sensitive Areas
 - Streams and Water Bodies (Hydrology)

SOMERSET COUNTY GIS ENTERPRISE
 - Municipal Boundaries
 - Parcels Boundaries
 - Highways & County Roads
 - Railroads

SOMERSET COUNTY PLANNING DIVISION
 - Proposed Service Areas for Facilities Discharging to Surface Water and Groundwater

Legend

PROPOSED FUTURE SERVICE AREAS FOR FACILITIES DISCHARGING TO SURFACE WATER (SW)

Somerset Raritan Valley Sewage Authority

PROPOSED FUTURE SERVICE AREAS FOR FACILITIES DISCHARGING TO GROUNDWATER (GWIND)

- Amwell Valley Country Club
- Duke Farms
- Hillsborough Chase
- Royce Brook Golf Club

AREAS TO BE SERVED BY INDIVIDUAL SUBSURFACE SEWAGE DISPOSAL SYSTEMS WITH PLANNING FLOWS 2,000 GPD OR LESS (ISSDS)

EXISTING AND PROPOSED NJDES PERMITTED DISCHARGE LOCATIONS

- Surface Water Discharge (DSW)
- Groundwater Discharge (DGW)

WASTEWATER FACILITIES

- Pump Station
- Trunk Lines / Interceptors

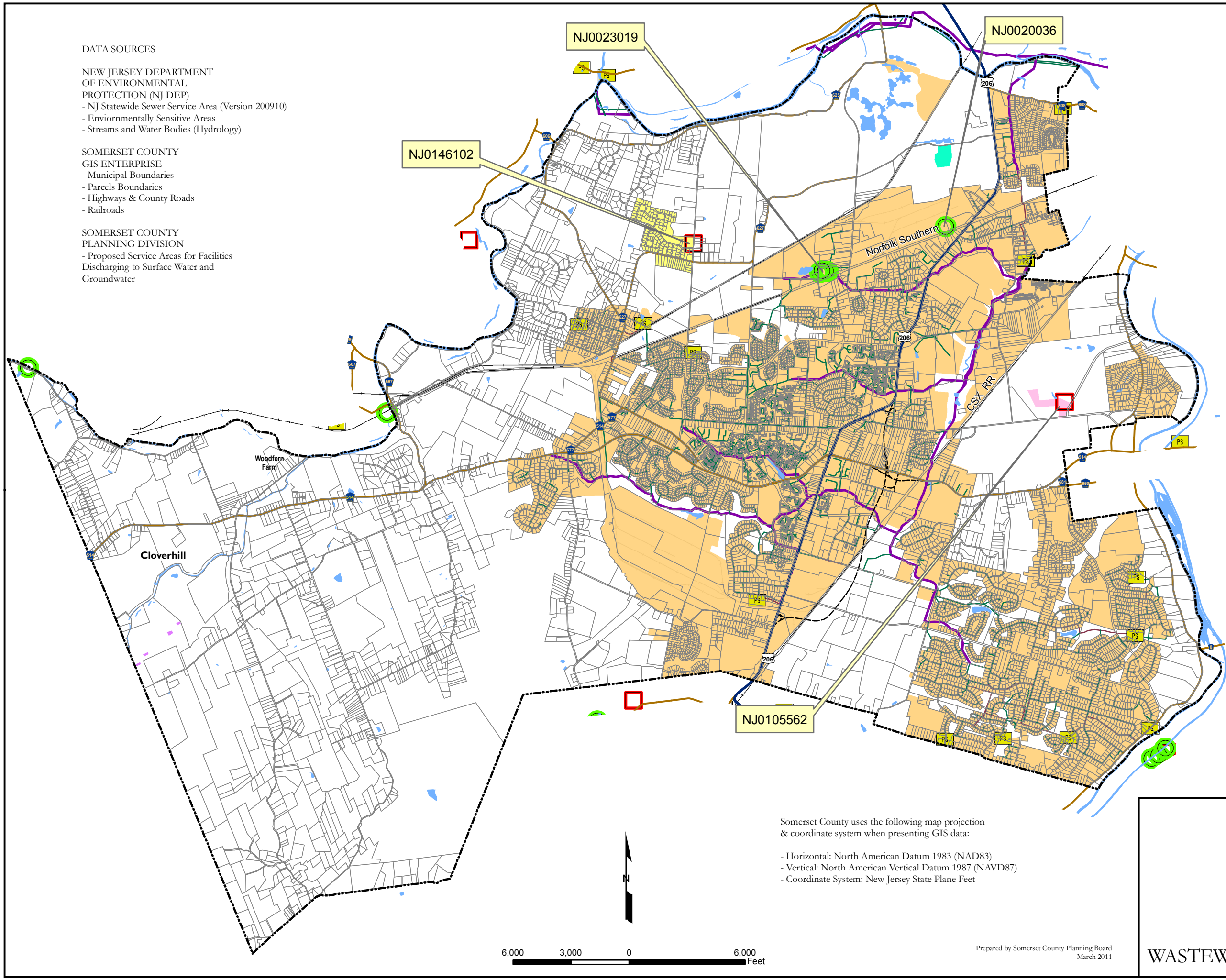
STREAMS AND WATER BODIES

MUNICIPAL BOUNDARIES

PARCEL BOUNDARIES

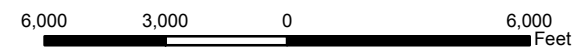
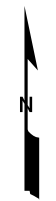
MAJOR ROADS

- US Highway
- County Road
- Railroads



Somerset County uses the following map projection & coordinate system when presenting GIS data:

- Horizontal: North American Datum 1983 (NAD83)
- Vertical: North American Vertical Datum 1987 (NAVD87)
- Coordinate System: New Jersey State Plane Feet



Prepared by Somerset County Planning Board
 March 2011

HILLSBOROUGH TWP
 Somerset County, NJ

Map III

FUTURE
 WASTEWATER SEWER SERVICE AREAS