

DATA SOURCES

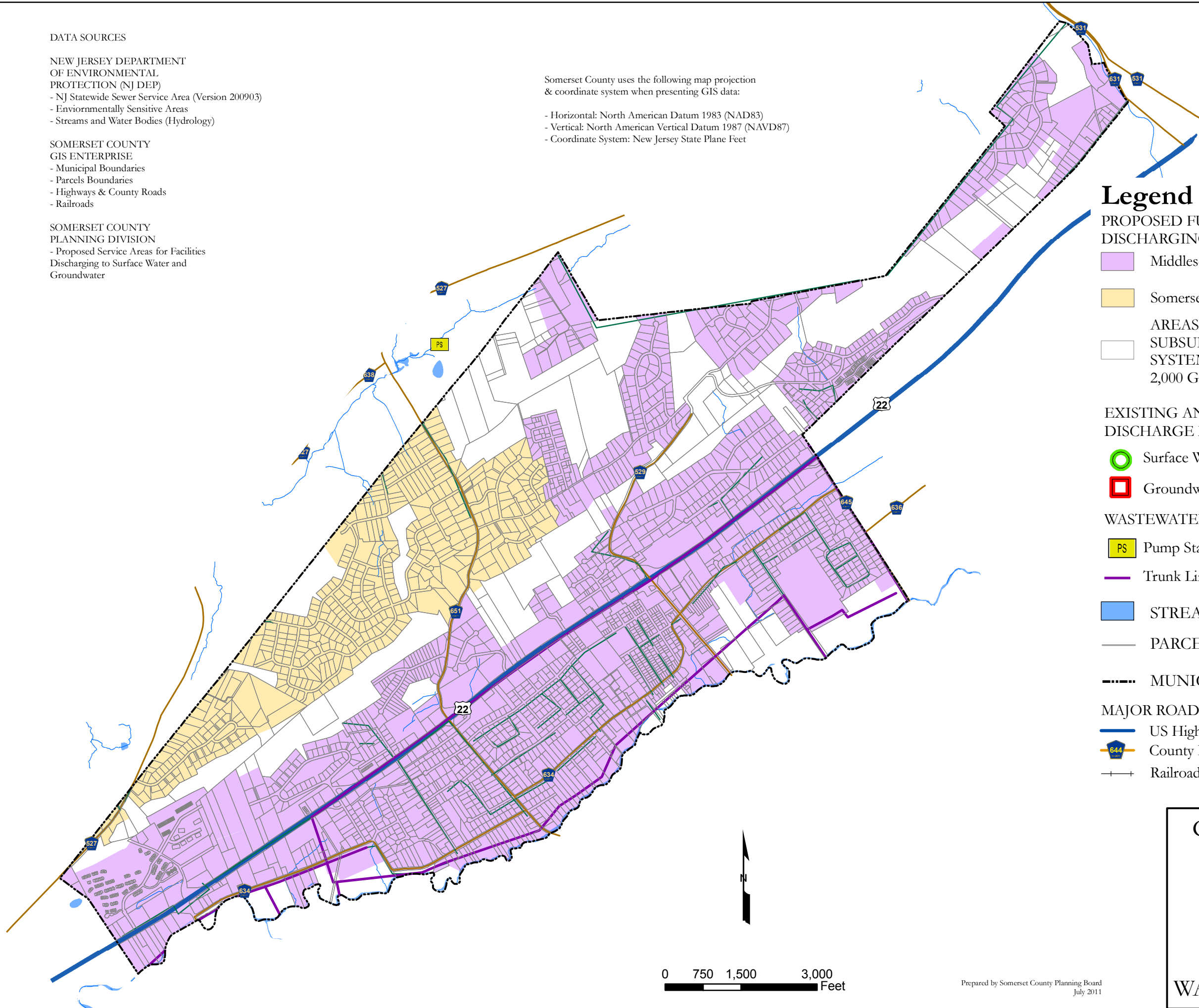
NEW JERSEY DEPARTMENT OF ENVIRONMENTAL PROTECTION (NJ DEP)
- NJ Statewide Sewer Service Area (Version 200903)
- Environmentally Sensitive Areas
- Streams and Water Bodies (Hydrology)

SOMERSET COUNTY GIS ENTERPRISE
- Municipal Boundaries
- Parcels Boundaries
- Highways & County Roads
- Railroads

SOMERSET COUNTY PLANNING DIVISION
- Proposed Service Areas for Facilities Discharging to Surface Water and Groundwater

Somerset County uses the following map projection & coordinate system when presenting GIS data:

- Horizontal: North American Datum 1983 (NAD83)
- Vertical: North American Vertical Datum 1987 (NAVD87)
- Coordinate System: New Jersey State Plane Feet



Legend

PROPOSED FUTURE SERVICE AREAS FOR FACILITIES DISCHARGING TO SURFACE WATER (SW)

- Middlesex County Utility Authority, (NJ0020141)
- Somerset Raritan Valley Sewage Authority, (NJ0024864)

AREAS TO BE SERVED BY INDIVIDUAL SUBSURFACE SEWAGE DISPOSAL SYSTEMS WITH PLANNING FLOWS 2,000 GPD OR LESS (ISSDS)

EXISTING AND PROPOSED NJDES PERMITTED DISCHARGE LOCATIONS

- Surface Water Discharge (DSW)
- Groundwater Discharge (DGW)

WASTEWATER FACILITIES

- Pump Station
- Trunk Lines / Interceptors

STREAMS AND WATER BODIES

PARCEL BOUNDARIES

MUNICIPAL BOUNDARIES

MAJOR ROADS

- US Highway
- County Road
- Railroads

GREEN BROOK TOWNSHIP
Somerset County, NJ

Map III

FUTURE
WASTEWATER SERVICE AREAS