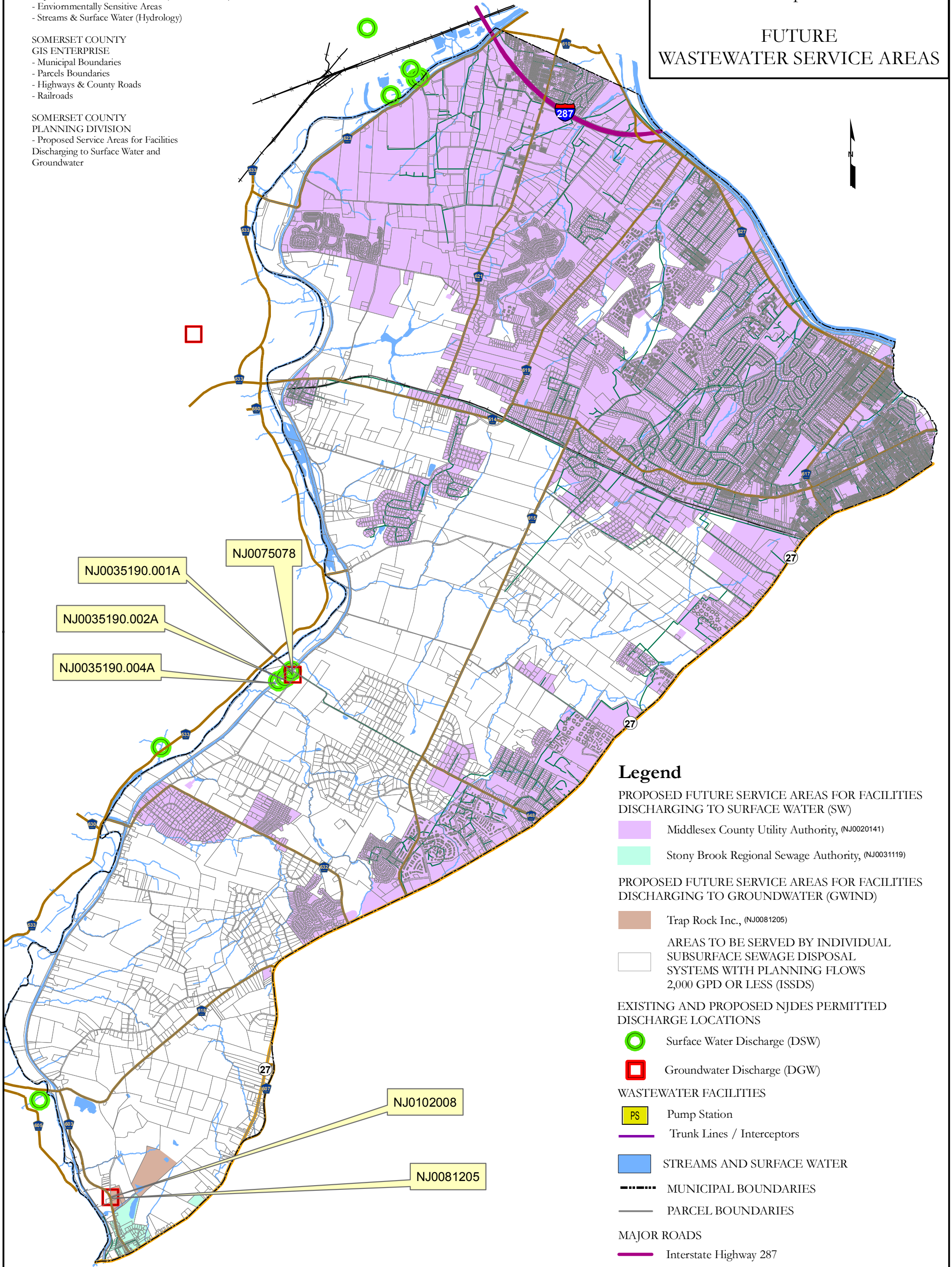


DATA SOURCES

NEW JERSEY DEPARTMENT
OF ENVIRONMENTAL
PROTECTION (NJ DEP)
- NJ Statewide Sewer Service Area (Version 200903)
- Environmentally Sensitive Areas
- Streams & Surface Water (Hydrology)

SOMERSET COUNTY
GIS ENTERPRISE
- Municipal Boundaries
- Parcels Boundaries
- Highways & County Roads
- Railroads

SOMERSET COUNTY
PLANNING DIVISION
- Proposed Service Areas for Facilities
Discharging to Surface Water and
Groundwater



Legend

PROPOSED FUTURE SERVICE AREAS FOR FACILITIES DISCHARGING TO SURFACE WATER (SW)

- Middlesex County Utility Authority, (NJ0020141)
- Stony Brook Regional Sewage Authority, (NJ0031119)

PROPOSED FUTURE SERVICE AREAS FOR FACILITIES DISCHARGING TO GROUNDWATER (GWIND)

- Trap Rock Inc., (NJ0081205)

AREAS TO BE SERVED BY INDIVIDUAL SUBSURFACE SEWAGE DISPOSAL SYSTEMS WITH PLANNING FLOWS 2,000 GPD OR LESS (ISSDS)

EXISTING AND PROPOSED NJDES PERMITTED DISCHARGE LOCATIONS

- Surface Water Discharge (DSW)
- Groundwater Discharge (DGW)

WASTEWATER FACILITIES

- PS Pump Station
- Trunk Lines / Interceptors

STREAMS AND SURFACE WATER

- MUNICIPAL BOUNDARIES
- PARCEL BOUNDARIES

MAJOR ROADS

- Interstate Highway 287
- State Highway 27
- County Roads
- RAILROADS

Somerset County uses the following map projection & coordinate system when presenting GIS data:

- Horizontal: North American Datum 1983 (NAD83)
- Vertical: North American Vertical Datum 1987 (NAVD87)
- Coordinate System: New Jersey State Plane Feet

