

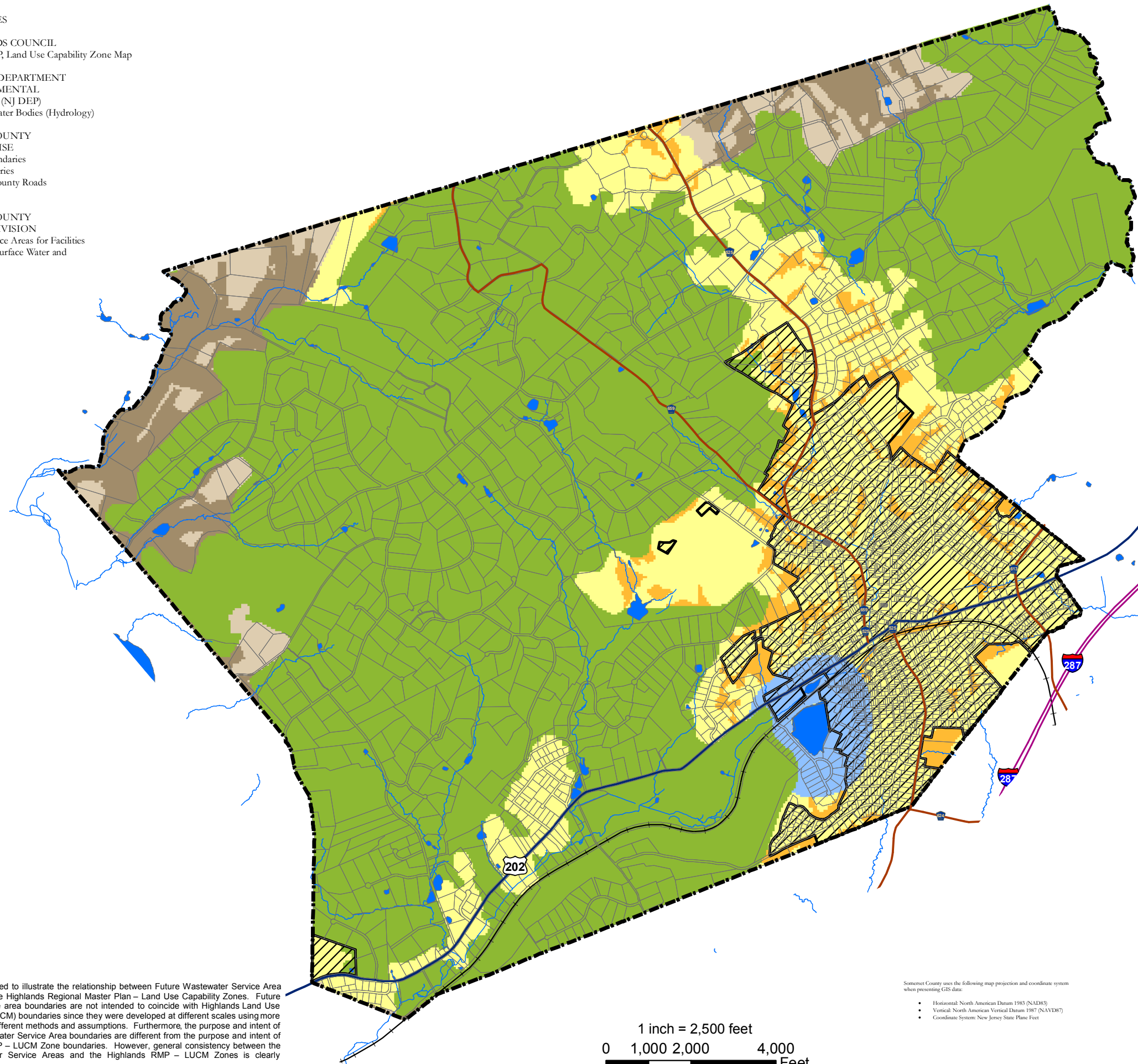
DATA SOURCES

NJ HIGHLANDS COUNCIL
- Highlands RMP, Land Use Capability Zone Map

NEW JERSEY DEPARTMENT
OF ENVIRONMENTAL
PROTECTION (NJ DEP)
- Streams and Water Bodies (Hydrology)

SOMERSET COUNTY
GIS ENTERPRISE
- Municipal Boundaries
- Parcels Boundaries
- Highways & County Roads
- Railroads

SOMERSET COUNTY
PLANNING DIVISION
- Proposed Service Areas for Facilities
Discharging to Surface Water and
Groundwater



Legend

- HIGHLANDS LAND USE CAPABILITY ZONE
- Existing Community Zone
 - Existing Community Zone - Environmentally Constrained Sub-zone
 - Conservation Zone
 - Conservation Zone - Environmentally Constrained Sub-zone
 - Protection Zone
- PROPOSED FUTURE SERVICE AREAS FOR FACILITIES DISCHARGING TO SURFACEWATER (SW) AND GROUNDWATER (GWIND)*
-
- STREAMS AND WATER BODIES
-
- MUNICIPAL BOUNDARIES
-
- PARCEL BOUNDARIES
-
- MAJOR ROADS
- Interstate Highway
 - US Highway
 - County Road
 - ++ Railroads

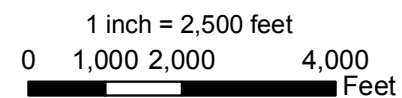
*Areas no within the proposed future service areas are to be served by Individual Subsurface Sewage Disposal Systems with planning flows 2,000 GPD or less. (ISSDS)

NOTES

1) This map is intended to illustrate the relationship between Future Wastewater Service Area Boundaries and the Highlands Regional Master Plan – Land Use Capability Zones. Future wastewater service area boundaries are not intended to coincide with Highlands Land Use Capability Map (LUCM) Zone boundaries since they were developed at different scales using more current data and different methods and assumptions. Furthermore, the purpose and intent of the Future Wastewater Service Area boundaries are different from the purpose and intent of the Highlands RMP – LUCM Zone boundaries. However, general consistency between the Future Wastewater Service Areas and the Highlands RMP – LUCM Zones is clearly demonstrated.

Somerset County uses the following map projection and coordinate system when presenting GIS data:

- Horizontal: North American Datum 1983 (NAD83)
- Vertical: North American Vertical Datum 1987 (NAVD87)
- Coordinate System: New Jersey State Plane Feet



Prepared by Somerset County Planning Board
February 2011

BERNARDSVILLE TWP
Somerset County, NJ
Delta Map
**FUTURE WASTEWATER SERVICE AREAS
AND THE
HIGHLANDS REGIONAL MASTER PLAN**