

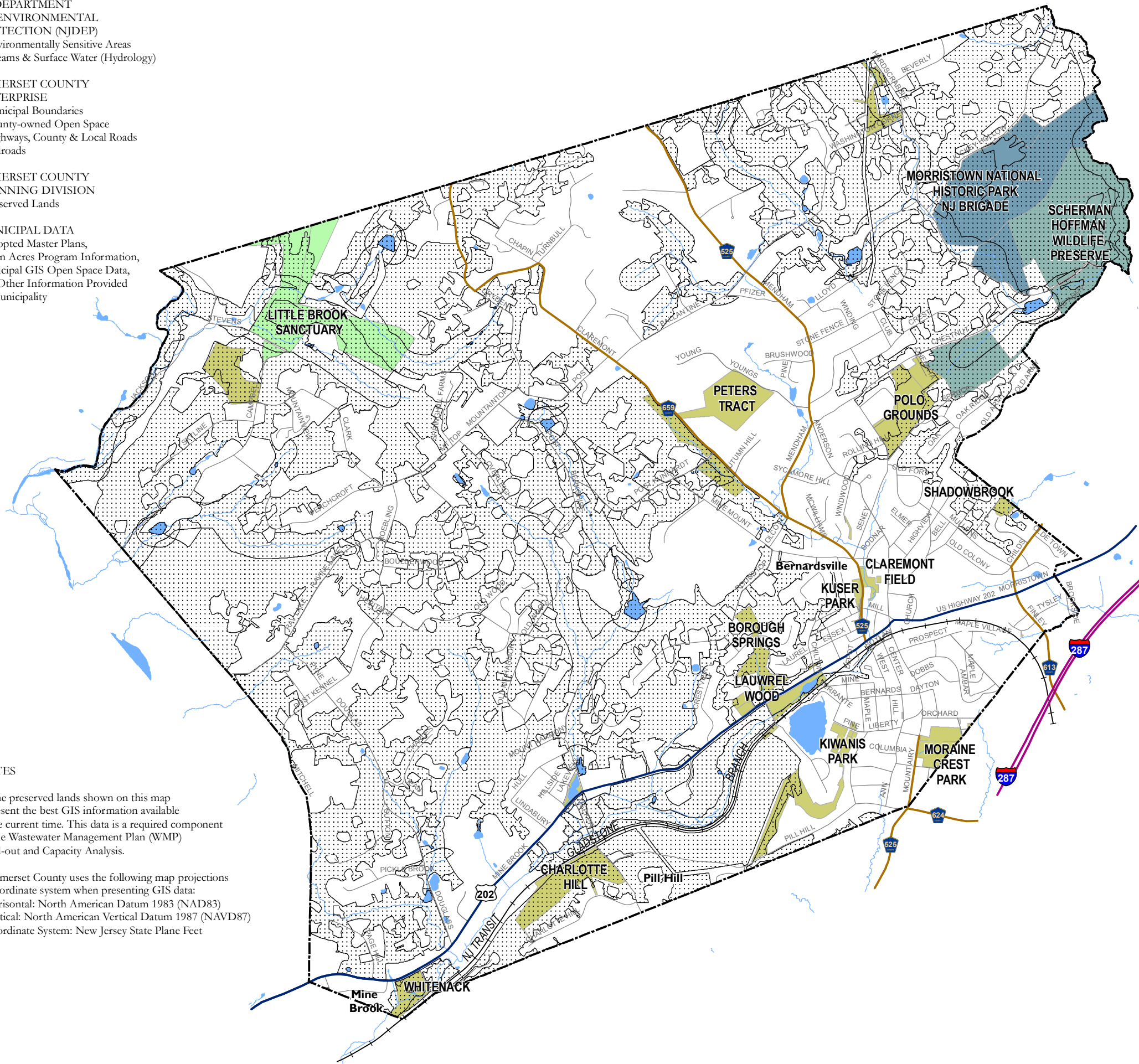
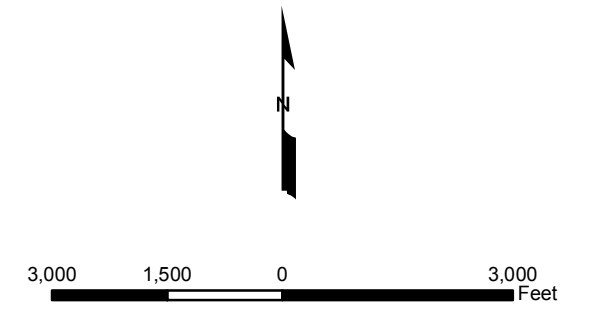
DATA SOURCES

NJ DEPARTMENT OF ENVIRONMENTAL PROTECTION (NJDEP)
 - Environmentally Sensitive Areas
 - Streams & Surface Water (Hydrology)

SOMERSET COUNTY ENTERPRISE
 - Municipal Boundaries
 - County-owned Open Space
 - Highways, County & Local Roads
 - Railroads

SOMERSET COUNTY PLANNING DIVISION
 - Preserved Lands

MUNICIPAL DATA
 - Adopted Master Plans, Green Acres Program Information, Municipal GIS Open Space Data, and Other Information Provided by Municipality



Legend

LAND PRESERVATION TYPE:

- Federal Preserved Lands (national parks)
- State Preserved Lands (parkland, wetland mitigation areas, flood control areas, and other undevelopable state-owned lands)
- County Preserved Lands (parkland, public golf courses, greenways, and other undevelopable county-owned lands)
- Local Preserved Lands (municipal parkland, homeowner association common areas, stormwater management facilities, non-profit and private deed-restricted lands, and other undevelopable local lands)
- ENVIROMENTALLY SENSITIVE AREAS
- STREAMS & SURFACE WATER
- MUNICIPAL BOUNDARIES
- MAJOR ROADS**
- Interstate Highway 287
- US Highway 202
- County Roads
- LOCAL ROADS
- RAILROADS

NOTES

1. The preserved lands shown on this map represent the best GIS information available at the current time. This data is a required component of the Wastewater Management Plan (WMP) Build-out and Capacity Analysis.
2. Somerset County uses the following map projections & coordinate system when presenting GIS data:
 - Horizontal: North American Datum 1983 (NAD83)
 - Vertical: North American Vertical Datum 1987 (NAVD87)
 - Coordinate System: New Jersey State Plane Feet

BERNARDSVILLE BOROUGH
 Somerset County, NJ

Map V

PRESERVED LANDS