

DATA SOURCES

NEW JERSEY DEPARTMENT OF ENVIRONMENTAL PROTECTION (NJ DEP)
 - NJ Statewide Sewer Service Area (Version 200903)
 - Environmentally Sensitive Areas
 - Streams and Water Bodies (Hydrology)

SOMERSET COUNTY GIS ENTERPRISE
 - Municipal Boundaries
 - Parcels Boundaries
 - Highways & County Roads
 - Railroads

SOMERSET COUNTY PLANNING DIVISION
 - Proposed Service Areas for Facilities Discharging to Surface Water and Groundwater

NOTES

*Land removed from NJDEP's previously adopted Sewer Service Areas will be added to areas served by individual subsurface sewage disposal systems with planning flows of 2,000 GPD or less.

1) The Proposed Service Areas shown on this map were prepared by the County Planning Division in cooperation with municipal wastewater management committees and NJDEP. They are subject to change based on the outcome of the public review process and Wastewater Management Plan (WMP) Build-out and Capacity Analysis.

2) This map is intended for historical informational purposes only and shall not be used for consistency determinations.

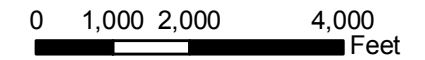
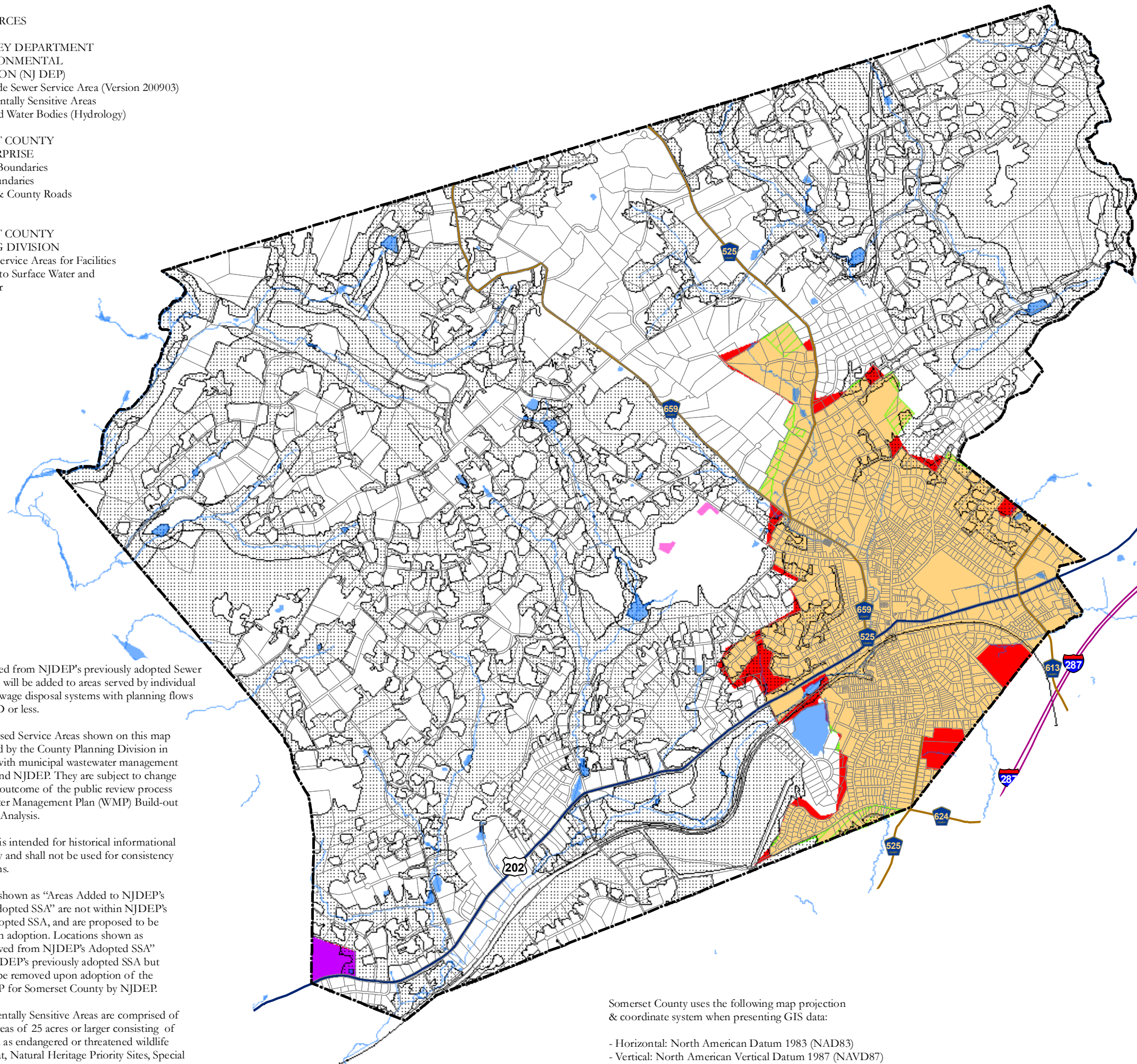
3) Locations shown as "Areas Added to NJDEP's Previously Adopted SSA" are not within NJDEP's previously adopted SSA, and are proposed to be included upon adoption. Locations shown as "Areas Removed from NJDEP's Adopted SSA" are within NJDEP's previously adopted SSA but proposed to be removed upon adoption of the updated WMP for Somerset County by NJDEP.

4) Environmentally Sensitive Areas are comprised of contiguous areas of 25 acres or larger consisting of areas mapped as endangered or threatened wildlife species habitat, Natural Heritage Priority Sites, Special Water Resource Protection Areas along Category One waters and their tributaries and wetlands by NJDEP.

Somerset County uses the following map projection & coordinate system when presenting GIS data:

- Horizontal: North American Datum 1983 (NAD83)
- Vertical: North American Vertical Datum 1987 (NAVD87)
- Coordinate System: New Jersey State Plane Feet

Prepared by Somerset County Planning Board
 December 2010



Legend

PROPOSED FUTURE SERVICE AREAS FOR FACILITIES DISCHARGING TO SURFACE WATER (SW)

Orange square: Borough of Bernardsville STP

PROPOSED FUTURE SERVICE AREAS FOR FACILITIES DISCHARGING TO GROUND WATER (GW)

Purple square: Far Hills Country Day School

Pink square: Somerset Hills Country Club

White square: AREAS TO BE SERVED BY INDIVIDUAL SUBSURFACE SEWAGE DISPOSAL SYSTEMS WITH PLANNING FLOWS 2,000 GPD OR LESS (ISSDS)

Red square: AREAS REMOVED FROM PREVIOUSLY ADOPTED SEWER SERVICE AREA (SSA)*

Green square with diagonal lines: AREAS ADDED TO PREVIOUSLY ADOPTED SSA

Dotted pattern: ENVIRONMENTALLY SENSITIVE AREAS

Blue square: STREAMS AND WATER BODIES

Dashed line: MUNICIPAL BOUNDARIES

Solid line: PARCEL BOUNDARIES

MAJOR ROADS

Blue line with shield: US Highway

Yellow line with shield: County Road

Black line with cross-ticks: Railroads

BENARDSVILLE BOROUGH
 Somerset County, NJ
 Delta Map
PROPOSED & PREVIOUSLY ADOPTED
FUTURE
WASTEWATER SERVICE AREAS