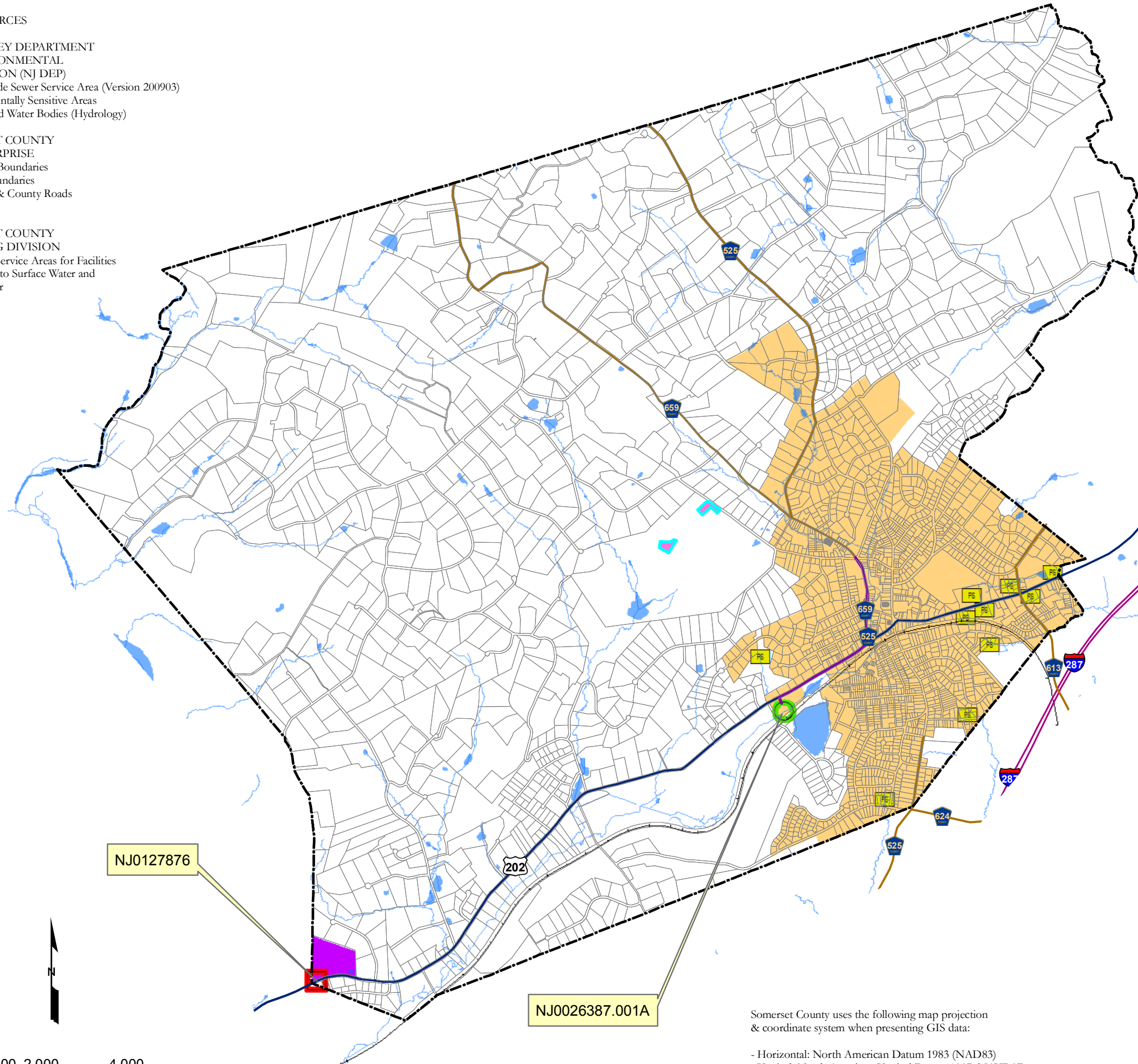


DATA SOURCES

NEW JERSEY DEPARTMENT OF ENVIRONMENTAL PROTECTION (NJ DEP)  
 - NJ Statewide Sewer Service Area (Version 200903)  
 - Environmentally Sensitive Areas  
 - Streams and Water Bodies (Hydrology)

SOMERSET COUNTY GIS ENTERPRISE  
 - Municipal Boundaries  
 - Parcels Boundaries  
 - Highways & County Roads  
 - Railroads

SOMERSET COUNTY PLANNING DIVISION  
 - Proposed Service Areas for Facilities Discharging to Surface Water and Groundwater



Legend

PROPOSED FUTURE SERVICE AREAS FOR FACILITIES DISCHARGING TO SURFACE WATER (SW)

Borough of Bernardsville STP, (NJ0026387)

PROPOSED FUTURE SERVICE AREAS FOR FACILITIES DISCHARGING TO GROUND WATER (GW)

Far Hills Country Day School, (NJG0127876)

Somerset Hills Country Club, (NJG0141488)

AREAS TO BE SERVED BY INDIVIDUAL SUBSURFACE SEWAGE DISPOSAL SYSTEMS WITH PLANNING FLOWS 2,000 GPD OR LESS (ISSDS)

EXISTING AND PROPOSED NJDES PERMITTED DISCHARGE LOCATIONS

Surface Water Discharge (DSW)

Groundwater Discharge (DGW)

WASTEWATER FACILITIES

Pump Station

Trunk Lines / Interceptors

STREAMS AND WATER BODIES

MUNICIPAL BOUNDARIES

PARCEL BOUNDARIES

MAJOR ROADS

US Highway

County Road

Railroads

NJ0127876

NJ0026387.001A

Somerset County uses the following map projection & coordinate system when presenting GIS data:  
 - Horizontal: North American Datum 1983 (NAD83)  
 - Vertical: North American Vertical Datum 1987 (NAVD87)  
 - Coordinate System: New Jersey State Plane Feet

Prepared by Somerset County Planning Board  
 March 2011

BENARDSVILLE BOROUGH  
 Somerset County, NJ  
 MAP III  
 FUTURE  
 WASTEWATER SERVICE AREAS

