

# Legend

## FUTURE SERVICE AREAS FOR FACILITIES DISCHARGING TO SURFACE WATER (SW)

- Environmental Disposal Corporation, (NJ0023996)
- Harrison Brook, (NJ0022845)
- Somerset Raritan Valley Sewage Authority, (NJ0024866)
- Veterans Administration, (NJ0021083)
- Warren Twp Sewage Authority Stage IV, (NJ0022497)

## FUTURE SERVICE AREAS FOR FACILITIES DISCHARGING TO GROUNDWATER (GWIND)

- The Albrook School, (NJG0132969)
- US Golf Association, (NJ0087378)
- Septic Areas  
(AREAS TO BE SERVED BY INDIVIDUAL SUBSURFACE SEWAGE DISPOSAL SYSTEMS WITH PLANNING FLOWS 2,000 GPD OR LESS (SSDS))

## EXISTING AND PROPOSED NJDES PERMITTED DISCHARGE LOCATIONS

- Surface Water Discharge (DSW)
- Groundwater Discharge (DGW)

## WASTEWATER FACILITIES

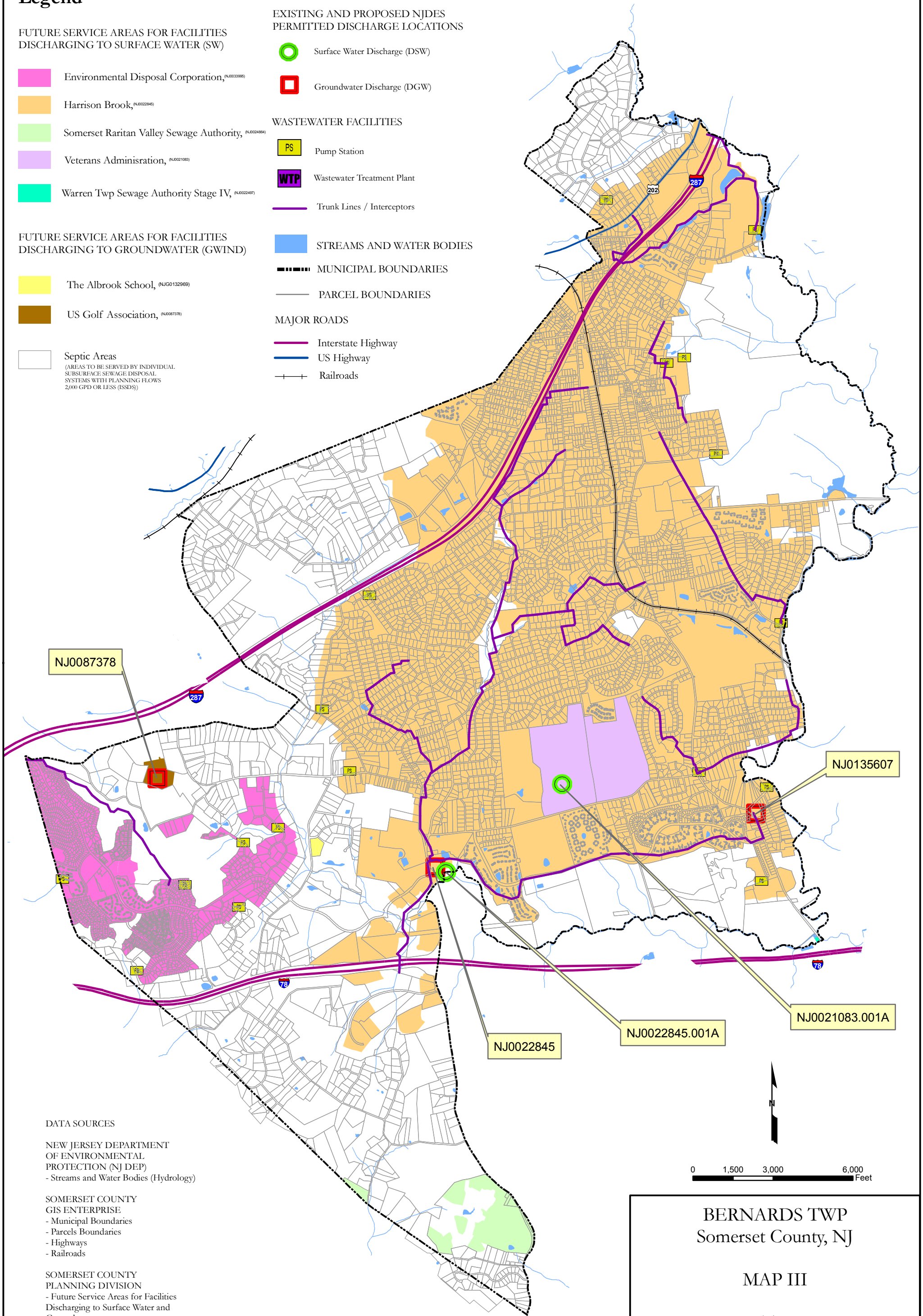
- PS Pump Station
- WTP Wastewater Treatment Plant
- Trunk Lines / Interceptors

## STREAMS AND WATER BODIES

- STREAMS AND WATER BODIES
- MUNICIPAL BOUNDARIES
- PARCEL BOUNDARIES

## MAJOR ROADS

- Interstate Highway
- US Highway
- Railroads



## DATA SOURCES

NEW JERSEY DEPARTMENT OF ENVIRONMENTAL PROTECTION (NJ DEP)  
- Streams and Water Bodies (Hydrology)

SOMERSET COUNTY GIS ENTERPRISE  
- Municipal Boundaries  
- Parcels Boundaries  
- Highways  
- Railroads

SOMERSET COUNTY PLANNING DIVISION  
- Future Service Areas for Facilities Discharging to Surface Water and Groundwater

**BERNARDS TWP**  
Somerset County, NJ

**MAP III**

**FUTURE**  
**WASTEWATER SERVICE AREAS**