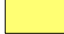

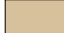




Somerset County uses the following map projection & coordinate system when presenting GIS data:

- Horizontal: North American Datum 1983 (NAD83)
- Vertical: North American Vertical Datum 1987 (NAVD87)
- Coordinate System: New Jersey State Plane Feet

Legend

HIGHLANDS LAND USE CAPABILITY ZONE

-  Existing Community Zone
-  Existing Community Zone - Environmentally Constrained Sub-zone
-  Conservation Zone
-  Conservation Zone - Environmentally Constrained Sub-zone
-  Protection Zone





 PROPOSED FUTURE SERVICE AREAS FOR FACILITIES DISCHARGING TO SURFACEWATER (SW) AND GROUNDWATER (GWIND)*

 STREAMS AND WATER BODIES

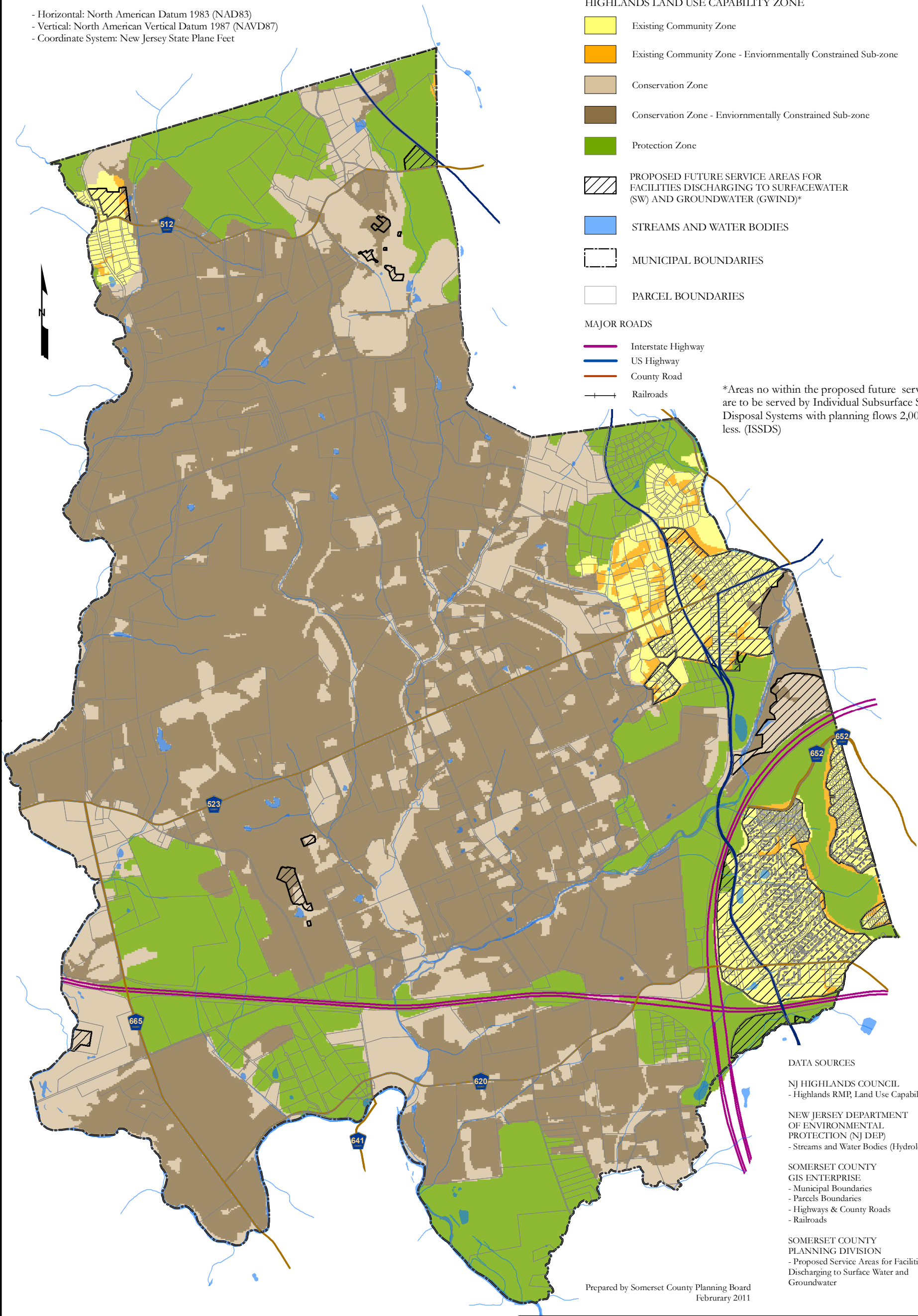
 MUNICIPAL BOUNDARIES

 PARCEL BOUNDARIES

MAJOR ROADS

-  Interstate Highway
-  US Highway
-  County Road
-  Railroads

*Areas not within the proposed future service areas are to be served by Individual Subsurface Sewage Disposal Systems with planning flows 2,000 GPD or less. (ISSDS)



DATA SOURCES

NJ HIGHLANDS COUNCIL
- Highlands RMP, Land Use Capability Zone Map

NEW JERSEY DEPARTMENT OF ENVIRONMENTAL PROTECTION (NJ DEP)
- Streams and Water Bodies (Hydrology)

SOMERSET COUNTY GIS ENTERPRISE
- Municipal Boundaries
- Parcels Boundaries
- Highways & County Roads
- Railroads

SOMERSET COUNTY PLANNING DIVISION
- Proposed Service Areas for Facilities Discharging to Surface Water and Groundwater

Prepared by Somerset County Planning Board
February 2011

NOTES

- 1) This map is intended to illustrate the relationship between Future Wastewater Service Area Boundaries and the Highlands Regional Master Plan – Land Use Capability Zones. Future wastewater service area boundaries are not intended to coincide with Highlands Land Use Capability Map (LUCM) boundaries since they were developed at different scales using more current data and different methods and assumptions. Furthermore, the purpose and intent of the Future Wastewater Service Area boundaries are different from the purpose and intent of the Highlands RMP – LUCM Zone boundaries. However, general consistency between the Future Wastewater Service Areas and the Highlands RMP – LUCM Zones is clearly demonstrated.

BEDMINSTER TOWNSHIP Somerset County, NJ Delta Map FUTURE WASTEWATER SERVICE AREAS AND THE HIGHLANDS REGIONAL MASTER PLAN