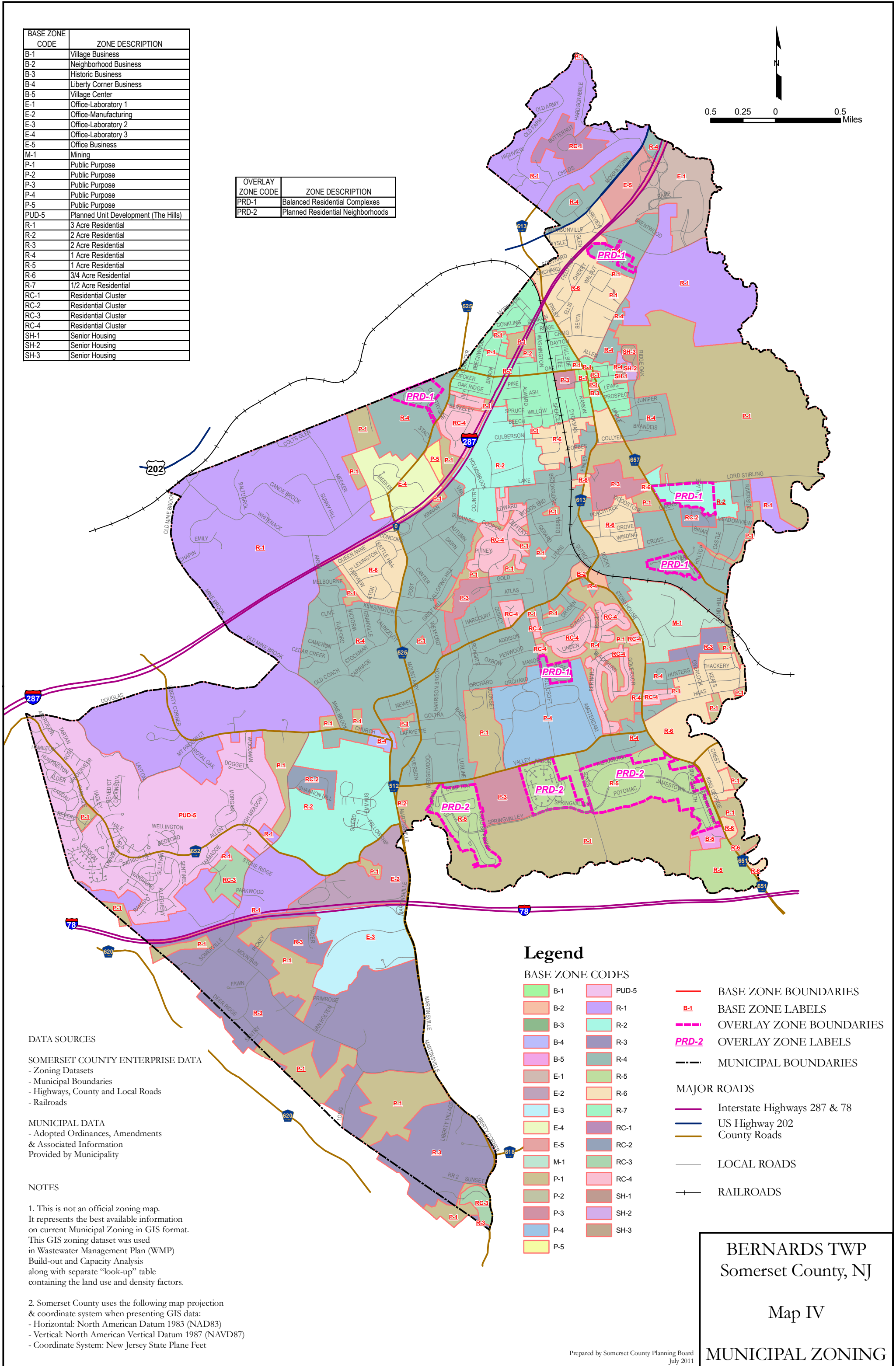
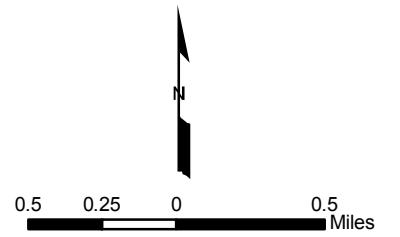


BASE ZONE CODE	ZONE DESCRIPTION
B-1	Village Business
B-2	Neighborhood Business
B-3	Historic Business
B-4	Liberty Corner Business
B-5	Village Center
E-1	Office-Laboratory 1
E-2	Office-Manufacturing
E-3	Office-Laboratory 2
E-4	Office-Laboratory 3
E-5	Office Business
M-1	Mining
P-1	Public Purpose
P-2	Public Purpose
P-3	Public Purpose
P-4	Public Purpose
P-5	Public Purpose
PUD-5	Planned Unit Development (The Hills)
R-1	3 Acre Residential
R-2	2 Acre Residential
R-3	2 Acre Residential
R-4	1 Acre Residential
R-5	1 Acre Residential
R-6	3/4 Acre Residential
R-7	1/2 Acre Residential
RC-1	Residential Cluster
RC-2	Residential Cluster
RC-3	Residential Cluster
RC-4	Residential Cluster
SH-1	Senior Housing
SH-2	Senior Housing
SH-3	Senior Housing

OVERLAY ZONE CODE	ZONE DESCRIPTION
PRD-1	Balanced Residential Complexes
PRD-2	Planned Residential Neighborhoods



DATA SOURCES

SOMERSET COUNTY ENTERPRISE DATA
 - Zoning Datasets
 - Municipal Boundaries
 - Highways, County and Local Roads
 - Railroads

MUNICIPAL DATA
 - Adopted Ordinances, Amendments & Associated Information
 Provided by Municipality

NOTES

1. This is not an official zoning map. It represents the best available information on current Municipal Zoning in GIS format. This GIS zoning dataset was used in Wastewater Management Plan (WMP) Build-out and Capacity Analysis along with separate "look-up" table containing the land use and density factors.

2. Somerset County uses the following map projection & coordinate system when presenting GIS data:
 - Horizontal: North American Datum 1983 (NAD83)
 - Vertical: North American Vertical Datum 1987 (NAVD87)
 - Coordinate System: New Jersey State Plane Feet

Legend

BASE ZONE CODES

	B-1		PUD-5
	B-2		R-1
	B-3		R-2
	B-4		R-3
	B-5		R-4
	E-1		R-5
	E-2		R-6
	E-3		R-7
	E-4		RC-1
	E-5		RC-2
	M-1		RC-3
	P-1		RC-4
	P-2		SH-1
	P-3		SH-2
	P-4		SH-3
	P-5		

- BASE ZONE BOUNDARIES
- BASE ZONE LABELS
- OVERLAY ZONE BOUNDARIES
- OVERLAY ZONE LABELS
- MUNICIPAL BOUNDARIES
- MAJOR ROADS**
- Interstate Highways 287 & 78
- US Highway 202
- County Roads
- LOCAL ROADS
- RAILROADS

BERNARDS TWP
 Somerset County, NJ

 Map IV

MUNICIPAL ZONING